



INTERNATIONAL GEMOLOGICAL INFORMATION

Expertise issued by I.G.I.
Head Office and Laboratories.

A DIVISION OF
INTERNATIONAL GEMOLOGICAL INSTITUTE

APPRAISAL REPORT

The following were, at the time of the examination, the characteristics, determining the appraised value of the article(s), based upon generally accepted grading techniques.

DATE: 11/09/2017

DESCRIPTION OF ARTICLE:

ONE PLATINUM MOUNTING (RING), WEIGHING IN TOTAL APPROX. 2.8 DWT., STAMPED "10% IRID. PLAT.", CONTAINING THE FOLLOWING:

[A] TWO NATURAL DIAMONDS, TAPERED BAGUETTE CUT, MEASURING APPROX. 4.20 x 1.50 x 1.20 MM., WEIGHT ESTIMATED AT 0.075 CARAT EACH, IN TOTAL 0.15 CARAT, COLOR: NEAR COLORLESS, CLARITY: VS(1)/VS(2), POLISH/SYMMETRY: GOOD/GOOD.

[B] ONE NATURAL DIAMOND, DETAILED DESCRIPTION BELOW:

SHAPE-CUT EMERALD CUT
Measurements APPROX. 6.45 x 4.30 x 2.80 MM.
Weight ESTIMATED BY FORMULA 0.65 CARAT

PROPORTIONS

Depth 65.1%
Table 64%
Girdle THIN TO SLIGHTLY THICK
Culet SMALL

FINISH

Polish GOOD
Symmetry GOOD

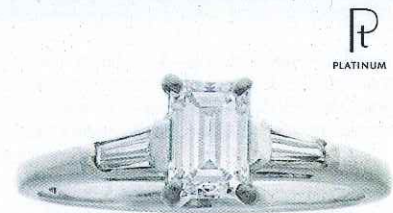
CLARITY GRADE VS(1)/VS(2)

COLOR GRADE NEAR COLORLESS (H-I)

Fluorescence NONE

COMMENTS:

GRADED AS MOUNTING PERMITS. GEMSTONES GRADE EXPRESSED AS AN AVERAGE. ESTIMATED TOTAL DIAMOND WEIGHT 0.80 CARAT(S). THIS APPRAISAL REPORT IS FOR INSURANCE PURPOSES.



TOTAL ESTIMATED RETAIL REPLACEMENT VALUE: \$ 4,055.00

PHOTOGRAPH ENLARGED.

TO WHOM IT MAY CONCERN.



INTERNATIONAL GEMOLOGICAL INSTITUTE

By: *International Gemological Information*

2-367-7989



NOTICE: SEE TERMS AND DEFINITIONS ON APPENDIX A
SEE TERMS AND CONDITIONS ON REVERSE



REPORT No. 4211130161