



SAPPHIRE REPORT

August 10, 2012

GIA REPORT 2141845420

Weight **1.76 carat**
 Measurements **7.43 x 6.22 x 4.86 mm**
 Shape..... **Oval**
 Cutting Style: Crown..... **Brilliant Cut**
 Cutting Style: Pavilion **Step Cut**
 Transparency..... **Transparent**
 Color..... **Blue**

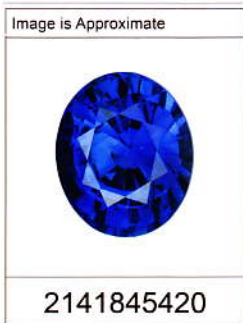
CONCLUSION

Species..... **NATURAL CORUNDUM**
 Variety..... **SAPPHIRE**
 Source Type **CMT Type I**
 Geographic Origin **NOT REQUESTED**

TREATMENT

Indications of heating (TE)

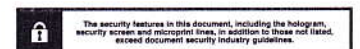
Comments:
None



No Indications of Heating	Indications of Heating (no residue)	Indications of Heating with Residue in Fissures				
		TE1	TE2	TE3	TE4	TE5
No Indications of Heating	Indications of Heating	Minor Residue in Fissures		Moderate Residue in Fissures		
		Significant Residue in Fissures				



This Report is not a guarantee, valuation or appraisal and contains only the characteristics of the article described herein after it has been graded, tested, examined and analyzed by the laboratory providing this Report ("GIA") and/or has been inscribed using the techniques and equipment used by GIA at the time of the examination and/or inscription. Inscriptions reported in this document are not a guarantee, validation, or warranty of an article's quality, country of origin or source; or that the article will be identifiable by the inscription in the future (since inscriptions can be removed). GIA makes no representation concerning any trademark, word, or symbol which is inscribed by GIA or which is identified on this Report. The recipient of this Report may wish to consult a credentialed jeweler or gemologist about the information contained herein.



IMPORTANT LIMITATIONS ON BACK
© 2008 GEMOLOGICAL INSTITUTE OF AMERICA, INC.